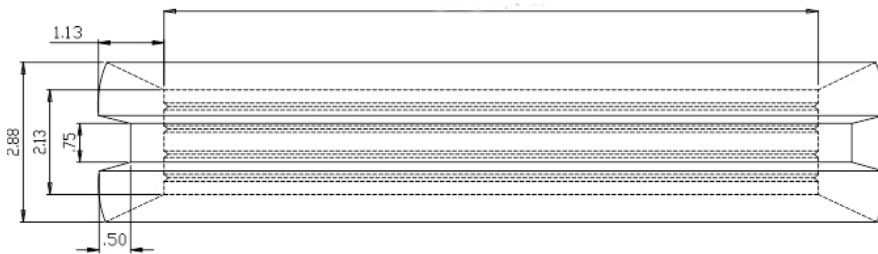
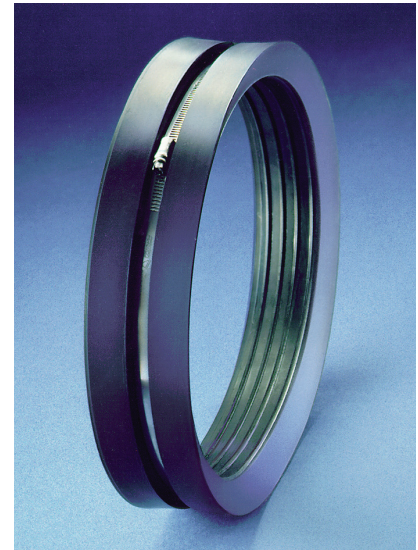


Large Diameter CMAs (LDCMA)

Concrete Manhole Adapter

- Designed for all 8" nominal diameter and larger sewer pipe connections
- Engineered to stop leaks around pipe penetrating manhole walls
- Flexible, allowing pipe to move without breaking grout
- Compatible with grout and concrete--will not rot or deteriorate
- Manufactured of a specially formulated PVC gasket material conforming to ASTM D 5926
- Supplied with 300 series stainless steel clamps
 - Installation torque 60-in lb
- Custom fabricated in sizes 8.4" and larger
 - Order by specifying the pipe outside diameter



Gasket Material Properties	Requirement	Test Method
Hardness (Shore A, 15 s Interval)	55-64	ASTM D2240
Brittleness Temperature (max)	-40°F	ASTM D746
Tensile Strength (psi)	1000	ASTM D412
Volatile Loss (221°F, max %)	6	ASTM D1203
Elongation at Break (%)	250	ASTM D412
Tear Strength (Min lbf/in.)	150	ASTM D624
Water Absorption (% Δ in Wt. Max)	20	ASTM D471
Chemical Resistance (48h at 74°F)		
1 N Sulfuric Acid Absorption	no wt. loss	ASTM D543
1 N Hydrochloric Acid Absorption	no wt. loss	
Oil Immersion (70h at 212°F)		
Max Volume Increase, %	10	ASTM D471
Max Volume Decrease, %	50	
Heat Aging (96 h at 158°F)		
Δ in Hardness (Shore A)	+10	ASTM D573
Tensile Strength (% Δ Max)	-25	
Elongation at Break (% Δ Max)	-35	
Stress Relaxation (min % Force Retention)	30	ASTM D6147
Ozone Resistance	no cracks	ASTM D1149
1.5ppm, 100 h at 104°F		

APPLICATIONS

